



Founded in 1976

# SESOBEL AUTISM CENTER - LEBANON Pilot Project



**Location:** Ain el Rihani, Kesrouan, Lebanon

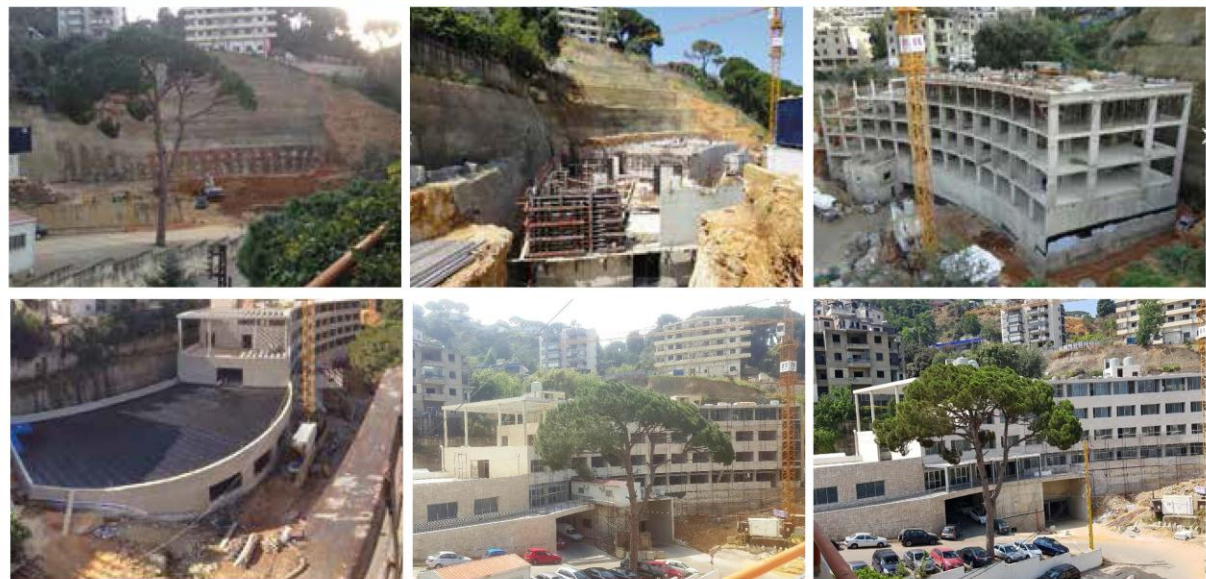
**Objective:** To provide a better setting for the harmonious development of children with autism.

**Total Budget:** USD 9,277,521

**Already raised:** USD 7,989,178 (as of June 2018)

**Remaining budget:** USD 1,288,343

## Center Progress (from September 2013 to June 2018)





## About SESOBEL

SESOBEL is a Lebanese Non-Governmental Association founded in 1976 to cater for the needs of children with motor and/or intellectual disabilities, as well as children with Autism.

SESOBEL is **state approved under decree No. 371/89, registered at the Ministry of Interior under the No. 42S1, and is a member of:**

- Rehabilitation International (RI),
- The National Union of Intellectual Disabilities (NUID)-Lebanon
- The International Cerebral Palsy Society (ICPS).

Our mission is to assist the children with disability, help their families, and generate social awareness to their needs and rights.

We welcome children from all regions regardless of their religion or socio-economic status. **In 2017-2018, SESOBEL assisted 1513 children & youth**, out of which 1086 were from the Outpatient Care Service, which welcomes any child in need for short-term temporary care (outside of the SESOBEL programs) through a network of therapists in all regions of Lebanon. We also strive to meet the complex needs of children with Autism and their families.

While there is no cure for autism, early intervention is critical and can greatly improve a child's development. In 1989, we started the early intervention program for children with Autism. Unfortunately, we have now reached the maximum capacity of our current building, thus hindering the proper implementation of our assistance program. Therefore, we urgently started building the new Autism Center in order to better satisfy the growing needs of our children with Autism.

For more details:

[www.sesobel.org/autism](http://www.sesobel.org/autism)

[autism@sesobel.org](mailto:autism@sesobel.org)

# What is Autism

Autism Spectrum disorder (ASD) is a **neurodevelopmental disorder characterized by repetitive and characteristic patterns of behavior and difficulties with social communication and interaction**. Parents usually notice signs in the first two years of their child's life. The signs typically develop gradually, but some children with autism will reach their developmental milestones at a normal pace and then regress.

ASD occurs in every racial and ethnic group, and across all socioeconomic levels. The latest analysis estimate that **1 in 68 children has ASD, and boys are significantly more likely to develop ASD than girls**. Scientists believe that **both genetic and environment likely play a role in ASD**. There is great concern that rate of autism have been increasing in recent decades without full explanation as to why. There is still much research to be done to determine the potential role of environmental factors on spontaneous mutations and how that influences ASD risk.

## How is ASD (Autism Spectrum Disorder) diagnosed?

ASD symptoms can vary greatly from person to person depending on the severity of the disorder. Symptoms may even go unrecognized for young children who have mild ASD or less debilitating handicaps.

### Very early indicators that require evaluation by an expert include :

- No babbling or pointing by age 1
- No single words by 16 months or two-word phrases by age 2
- No response to name
- Loss of language or social skills previously acquired
- Poor eye contact
- Excessive lining up of toys or objects
- No smiling or social responsiveness

### Later indicators include :

- Impaired ability to make friends with peers
- Impaired ability to initiate or sustain a conversation with others
- Absence or impairment of imaginative or social play
- Repetitive or unusual use of language
- Abnormally intense or focused interest
- Preoccupation with certain objects or subjects
- Inflexible adherence to specific routines or rituals

A comprehensive evaluation requires a multidisciplinary team , including a psychologist, neurologist, psychiatrist, speech therapist and other professionals who diagnose and treat children with ASD.

## How is autism treated?

There is no cure for ASD. Therapies and behavioral interventions are designed to remedy specific symptoms and can substantially improve those symptoms. The ideal treatment plan coordinates **therapies and interventions that meet the specific needs of the individual**.

Most health care professionals agree that **the earlier the intervention , the better**.

**Early behavioral/educational interventions have been very successful in many children with ASD**. In addition, family counseling for the parents and siblings of children with ASD often helps families cope with the particular challenges of living with a child with ASD.

## About SESOBEL's new Autism Center

With this new Autism Center, SESOBEL is taking a large leap forward towards the future.

The center will be completely adapted to provide the necessary setting needed for the harmonious development of the children and youth with autism. The spacious classrooms, workshops, treatment and rehabilitation rooms, game room, resting area, all allow for a special integration of functionality unseen in other school settings.

### The direct beneficiaries are:

- 50 underage children (0 to 6 years old) with physical and/or mental disability, or with pervasive developmental disorders (autism)
- 40 children and youth with autism between the ages of 6 to 20 years old
- 30 young adults with severe autism will be welcomed in a daytime center for socialization and accompaniment
- 15 youth with autism, 14 years and older, will be cared for on a rotation basis in a pioneer living space with private bedrooms and bathrooms

This living space is unique in Lebanon and new to the Middle East; the youngsters with autism will learn to live independently and autonomously, away from their home setting.

100 outpatient children and youth will benefit from around 1665 therapy sessions. Furthermore, by transferring the children with autism to this new center, we can provide extra space in the existing buildings for the 3 actual workshops (Chocolate-Biscuits-Decoration) needed for our children and youth with mental disabilities and autism.

### The other beneficiaries are:

- Around 220 parents and siblings will be received for family guidance purposes, for social group interventions and for relaxation sessions. The siblings will receive: information about the disability of their brother and/or sister, support in case of difficulties caused by the presence of a brother or a sister with disability, personal attention that will help them develop and grow and a preparation with their parents for the future of their brother or sister.
- 57 teachers, 22 therapists and 2 social workers will also benefit from a better-adapted working environment to cater more efficiently to the needs of our children.

### The building will contain several features:

- A family reception for 220 families
- An early intervention center for 50 children from 0 to 6 years old
- An education center for 40 children and youth with autism
- Therapy units for 100 children and youth
- Outpatient care program (Speech therapy-Occupational Therapy- Psychomotor Therapy- Physiotherapy and Psychotherapy)
- A residential care center with private bedrooms and bathrooms to welcome, on a rotation basis, 15 youngsters with autism.
- A daytime center for support and socialization, and social integration for 30 young adults.
- A recreational area for the children and their families
- A hydrotherapy unit for children with autism that will also be used by around 200 children and youth with disabilities at SESOBEL.

This hydrotherapy unit will benefit outpatients and will therefore be a source of self-financing (around 3120 therapy sessions per year).

For more details: [www.sesobel.org/autism](http://www.sesobel.org/autism) // [autism@sesobel.org](mailto:autism@sesobel.org)

Contact SESOBEL: Ain El-Rihani, street 11, Kesrouan - P.O.Box: 551 Zouk-Mikael - Lebanon

t: +961 9 233940/2. f: +961 9 233 943 [www.sesobel.org](http://www.sesobel.org) - [info@sesobel.org](mailto:info@sesobel.org) - [www.facebook.com/SESOBEL.LB](http://www.facebook.com/SESOBEL.LB)

## Estimated Budget

### **A. Total Budget for the construction of the Autism Center: USD 9,277,521**

1. The Land: **USD 2,235,000** (USD 342 /m<sup>2</sup> x 6,537m<sup>2</sup>)
2. Permit from the Engineers Syndicate: **USD 11,223**
3. Permit from the Municipality of Aintoura: **USD 23,722**
4. Studies and consultancy: **USD 150,500**
  - architectural concept and drawings: USD 126,500
  - structural studies: USD 8,000
  - electrical drawings for the official permit: USD 8,000
  - mechanical drawings: USD 8,000
5. Soil Reinforcement: **USD 320,280** (Study on soil mechanics, Coring and Shoring)
6. Generator 350 KVA: **USD 62,000**
7. Global construction cost: **USD 6,474,796** (USD 864/m<sup>2</sup> x 7,500 m<sup>2</sup>)  
(including the cost of the construction of the hydrotherapy unit: USD 1,298,383)
8. External gardens and playgrounds are still under study, therefore, their cost is not included in the budget.

### **B. Already Raised: USD 7,989,178 (as of 30/06/2018)**

So far, our esteemed donators helped to raise USD 7,989,178

1. Studies and Consultancy Services: **USD 167,000**
  - Study on soil mechanics: USD 43,080 (out of the budgeted USD 320,280)
  - Architectural concept and drawings: USD 100,000 (out of the budgeted USD 126,500)
  - Structural studies: USD 8,000
  - Electrical drawings for the official permit: USD 8,000
  - Mechanical drawings: USD 8,000
  - Consultancy/Follow-up: offered from 2 engineers, members of SESOBEL's board

**2. In- Kind Donations: USD 2,308,055**

- The Land 6,537m<sup>2</sup>: USD 2,235,000
- Participation for the permit from the Municipality of Aintoura: USD 11,055
- Generator 350 KVA: USD 62,000

**3. Specific donation for the construction and the equipment of the hydrotherapy unit to be executed under the donator's supervision: USD 1,298,383**

**4. Donations in Cash: USD 4,215,740:**

- Donations to cover units in the center generated USD 2,154,120:

- \*2 Psychomotor Therapy Rooms (USD 40,000 for both)
- \* 1 Game Room (USD 50,000)
- \* 1 Screening room (USD 30,000)
- \* 1 Infirmary (USD 10,000)
- \* 2 Polyvalent Rooms (USD 300,000 for both)
- \* 1 Reception area (USD 150,000)
- \* 2 Refectories& Kitchens (USD 200,000 for both)
- \* 2 Resting areas (USD 200,000 for both)
- \* 1 Internal Garden (USD 50,000)
- \* 1 Indoor Play area (USD 50,000)
- \* 9 classes (USD 240,000 for all)
- \* 1 Bedroom with Bathroom (USD 30,000)
- \* 4 Speech Therapy Rooms (USD 80,000 for all)
- \* 1 Physiotherapy Room (USD 20,000)
- \* 1 Occupational therapy Room (USD 20,000)
- \* 1 Psychotherapy Room (USD 20,000)
- \* 2 TV Therapy Rooms (USD 40,000 for both)
- \* 1 TV Room (USD 18,000) *Remaining USD 2,000 to be covered*
- \* 2 Computer Rooms (USD 40,000 for both)
- \* 1 Handcraft workshop Room (USD 20,000)
- \* 3 offices (USD 60,000 for all)
- \* 9 services areas (WC, cloakroom, lunchroom, bathroom) (USD 90,000 for all)
- \* 1 Data Room (USD 10,000)
- \* 1 Laundry (USD 10,000)
- \* 4 circulation stairs (USD 146,120 for all)
- \* 2 TED Therapy Room (USD 60,000 for both)
- \* 2 Terraces (USD 40,000 for both)
- \* 1 Lift ( USD 100,000)
- \*1 music workshop ( USD 30,000)
- \*1 Painting Workshop ( USD 60,000) *generated from Le Gray Painting Exhibition-Accounted for in the Painting Exhibition & Different Donations Sections below*

(from which 16 units were sponsored at the 1st Dubai dinner and generated USD 700,000 and 6 units were sponsored at 2nd Dubai dinner and generated USD 268,000 )

- The Brick by Brick campaign generated **USD 229,260**  
(from which USD 13,041 were generated from 1st Dubai dinner and USD 1,516 were generated from 2nd Dubai dinner)
- The Walls campaign generated **USD 40,000**  
(from which USD 10,000 were generated from 1st Dubai dinner by selling 2 walls and USD 25,000 were generated from 2nd Dubai dinner by selling 5 walls)
- The painting exhibitions done by our children with autism generated **USD 259,462**  
(from which USD 50,000 were generated from 1st Dubai dinner by selling 10 paintings & USD 78,628 were generated from 2nd Dubai dinner by selling 15 paintings & USD 9500 were generated at the opening of the hydrotherapy unit by selling 4 paintings & USD 57,000 were generated from Le Gray Painting Exhibition-May 2018 by selling 19 paintings)
- Different donations: **USD 1,130,266**  
(from which USD 68,187 were generated from 1st Dubai dinner and USD 110,619 from 2nd Dubai dinner and USD 10,159 from Le Gray Painting Exhibition-May 2018 )
- First annual Gala Dinner in Dubai- Feb 2015 generated in total USD 1,059,213  
(USD 841,228 from the donations to cover units, Brick by Brick, walls, Paintings and other donations which are already accounted for in the above sections), and **USD 217,985** from the reservation of tables
- Second annual Gala Dinner in Dubai- Feb 2016 generated in total USD 664,170  
(USD 483,763 from the donations to cover units, Brick by Brick, walls, Paintings and other donations which are already accounted for in the above sections), and **USD 180,407** from the reservation of tables.
- Painting Sales done by our children with autism generated **USD 4,240**

\* P.S. Next Care donation: USD 30,000 in 2015 and USD 10,000 in 2016 as a donation for the living space program for the children with autism. (This donation is not accounted for in the construction cost.)



### **C- We still need your help to raise the remaining: USD 1,288,343**

Confident in your cooperation and support to our cause, we solicit your donations, as a Sesobel friend and supporter, in order to continue the construction of our autism center by covering the costs of particular units, classrooms or other facilities. Hence, you will be directly contributing to the well-being and the happiness of our children, youth and adults with autism.

(kindly refer to the enclosed “Partnership opportunities proposal” on the next page)

#### **Summary(as of 30/06/2018):**

– **Total Budget: USD 9,277,521**

– **Raised: USD 7,989,178**

\*Studies and Consultancy: USD 167,000

\*In- Kind Donations: USD 2,308,055

\*Specific donation for the construction of the Hydrotherapy unit: USD 1,298,383

\*Total donations in Cash: USD 4,215,740

– **Remaining Balance to be funded: USD 1,288,343**



### REMAINING UNITS AVAILABLE FOR SPONSORSHIP ( AS OF 30/06/2018)

	UNITS NEEDED	COST / UNIT (USD)	UNITS ALREADY ACQUIRED	REMAINING AVAILABLE UNITS	PARTNERSHIP
Refectory and Kitchen	4	100,000	2	2	Platinum
Lift	2	100,000	1	1	Platinum
Sensory Room- fully equipped	1	120,000	0	1	Platinum
Handcraft workshop	1	60,000	0	1	Gold
Classes	22	30,000	9	13	Silver
Bedrooms with bathrooms	8	30,000	1	7	Silver

Other ways to contribute:

1 Symbolic wall: USD 5,000

1 Symbolic brick: USD 500

### UNITS ALREADY SPONSORED (AS OF 30/06/2018)

Partnership	Donor	Tag	Contribution	Cost per unit USD
Honorary	The Maronite Patriarcate of Lebanon		Rent-free land	
Honorary	Anonymous	In Loving Concern for all children	Hydrotherapy unit	1,298,383
			Lift	100,000
Diamond	Conferenza Episcopale Italiana	Conferenza Episcopale Italiana	Early Stimulation Unit	707,793
Diamond	Bequeaths in Memory of Mr. & Mrs. Jean-Yves Eicheberger-Partage	Parking B3	Donation	602,307
Lead	Choueiri Family	In Loving Memory of Antoine Choueiri	Reception area	150,000
		In Loving Memory of Antoine Choueiri	Polyvalent room	150,000
		Pierre & Maya Choueiri	2 Terraces	20,000
Lead	Bequeaths In Memory of Pierre Cordahi	Parking B2	Donation	219,840
Lead	Bank of Sharjah Dubai	Bank of Sharjah Dubai	Polyvalent room	150,000
Platinum	Robert Matta	Alfred & Nadia Matta	Refectory & Kitchen	100,000
Platinum	Joseph & Daad Ghoussoub	Joseph & Daad Ghoussoub	Resting area	100,000
Platinum	Georges N. Frem & Brothers Foundation	Georges N. Frem & Brothers Foundation	Resting area	100,000
Platinum	Fares Farid Korkmaz	Fares Farid Korkmaz	Psychotherapy room	20,000
		Fares Farid Korkmaz	Music Workshop	30,000
		Fares Farid Korkmaz	Class + donation	50,000
Gold	Tareq Jallad		Caterpillar Generator	62,000
Gold	SGBL		Donation	60,000
Gold	SESOBEL's artists at the autism program	Covered 1 brushstroke at a time by SESOBEL's artists with autism	Painting Workshop	60,000
Gold	Father Hady Daou	In Loving Memory of Yvonne Safi	Game room	50,000
Gold	Hady & Lara Mouawad	Rayan Hady Mouawad	Indoor play area	50,000
Gold	May Mikati	Nada Maher Mikati	TED Therapy room	30,000
		Mida Maher Mikati	TED Therapy room	30,000
Silver	Bsaibes Family	Omaima Farhat Bsaibes	Psychomotor Therapy room	20,000
Silver	Fadi & Frida Chammas	Dana Fadi Chammas	Psychomotor Therapy room	20,000
		Karim Fadi Chammas	Computer Room	20,000
Silver	Vera Akkawi	Nicolas Akkawi	Computer Room	20,000
Silver	Georges & Carole Chidiac	Georges & Carole Chidiac	Bedroom with Bathroom	30,000
Silver	Nazih & Maria Khattar	Nazih & Maria Khattar	Class	30,000
Silver	Nazih & Maria Khattar	Nazih & Maria Khattar	Class	30,000
Bronze	Fadwa Kahale	In Loving Memory of Farid Kahale	Speech therapy Room	20,000
Bronze	Samir Moawad	In Loving Memory of Nohad Azar Moawad	Speech therapy Room	20,000
Bronze	S.W. Smayra Family	S.W. Smayra Family	Physiotherapy room	20,000
Bronze	S.W. Smayra Family	S.W. Smayra Family	Tv therapy room	20,000
Bronze	ESEC International	ESEC International - Dubai	Speech therapy Room	20,000
Bronze	Western Union - Dubai	Western Union - Dubai	Speech therapy Room	20,000
Bronze	OMNICOM Media Group	OMNICOM Media Group - Dubai	Tv therapy room	20,000
Bronze	OMNICOM Media Group	OMNICOM Media Group - Dubai	Class	20,000
Bronze	Samir Khoury / Amer Hneidi/Bechara Bejani/ Elias Hanna	Samir Khoury / Amer Hneidi/Bechara Bejani/ Elias Hanna	TV room	20,000

**HONORARY:** USD 1,000,000 AND ABOVE

**DIAMOND:** USD 500,000 TO USD 999,999

**LEAD:** USD 150,000 TO USD 499,999

**PLATINUM:** USD 100,000 TO USD 149,999

**GOLD:** USD 50,000 TO USD 99,999

**SILVER:** USD 30,000 TO USD 49,999

**BRONZE:** USD 20,000 TO USD 29,999

**PS: All estimations above include the design cost, study, permit, coring and shoring, excavations and concrete works.**



**Help us raise the amount needed to complete the project!**

**We are truly looking forward to having you as one of our partners/sponsors by:**

- **Sponsoring a unit**(ref. to the table on the previous page for available units) where your name, the name of a beloved family member, or your esteemed company name would be mentioned at the entrance of this unit
- Directly **donating cash**

Please feel free to use the below bank details for participations/donations.

***Sesobel (Autism Center) Bank Electronic Transfer Instructions***

**IBAN#** LB97 0056 0000 7175 3461 0020 1205

**Bank Name** Bank Audi sal / Zouk Branch (012) – Lebanon

**Beneficiary Name** Sesobel

**Account Number (US\$)** 071753 - 461 - 05

**SWIFT Code** AUDBLBBX

Please forward a copy of the transfer to the following:

[autism@sesobel.org](mailto:autism@sesobel.org)

**For US Citizens**

Donations from US Citizens are tax deductible.

Please use: 501 (c) 3 Federal Tax ID Number 20-2759148

For details regarding SESOBEL US bank accounts, please contact:

[autism@sesobel.org](mailto:autism@sesobel.org)

For more details: [www.sesobel.org/autism](http://www.sesobel.org/autism) // [autism@sesobel.org](mailto:autism@sesobel.org)

Contact SESOBEL: Ain El-Rihani, street 11, Kesrouan - P.O.Box: 551 Zouk-Mikael - Lebanon

t: +961 9 233940/2. f: +961 9 233 943 [www.sesobel.org](http://www.sesobel.org) - [info@sesobel.org](mailto:info@sesobel.org) - [www.facebook.com/SESOBEL.LB](https://www.facebook.com/SESOBEL.LB)

Foundation n° 425J /1980 - Association recognized for public utility by Decree No. 371/89 - Winner of the "Médecine Entraide" award, 1988 - Association accredited by UNICEF

We would also like to share with you the professionals and renowned companies that Sesobel has teamed-up with for the execution of this important project. Additional details and information can be provided upon request.

## **Project References**

General Contractor:

- Entreprises MATTA et ASSOCIES SAL represented by Mr. René Matta

Project Consultants:

- Preliminary Design : Mr. Michel Honein - MH Architects
- Project Architect: Mr. Jean Pierre Gebara - Gebara CAD (Construction And Development)
- Soil mechanics study and execution: Dr. Jean- Baptiste Osta – Soil Mechanics Associates
- MEP Consultants:
  - \* Mechanical: Mrs. Mira Aramouny Osta - Climate Control ENT'L, engineering & contracting
  - \* Electrical: Mr. Nagi Geha - Geha engineering Electrical design and consulting
- Structural Consultant: Mr. Nayef Azar
- Quality & Technical Control: Mr. Labib Akiki - Confirm General contracting SAL
- External Auditors (Sesobel fiscal ID # 189510):
  - \* Ernst & Young et Associés
  - \* Cabinet Antoine Haddad - Comptabilité et Expertise
- Client (Sesobel) Representatives
  - \* Mr. Selim Khoury, Engineer/Board member
  - \* Mrs. Fadia Safi, President Sesobel
  - \* Mr. Labib Akiki, Board member

For more details: [www.sesobel.org/autism](http://www.sesobel.org/autism) // [autism@sesobel.org](mailto:autism@sesobel.org)